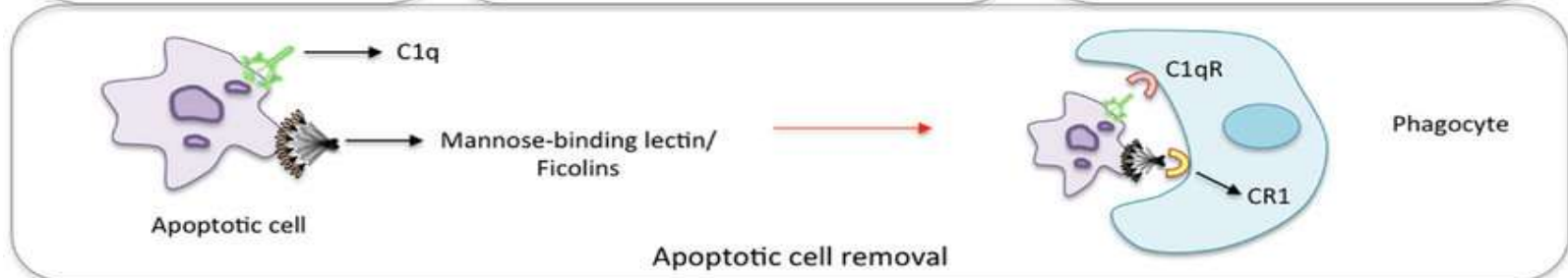
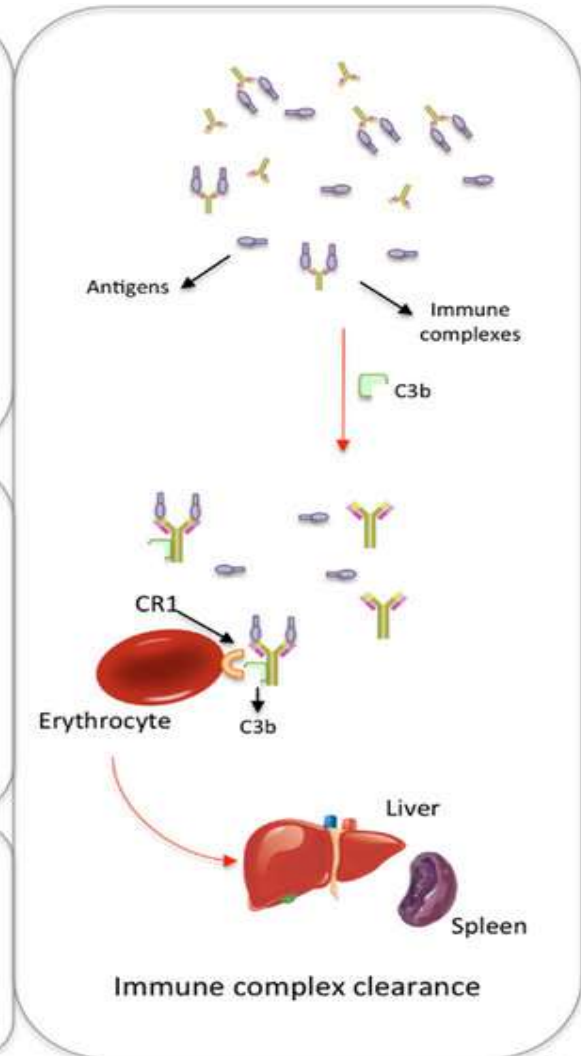
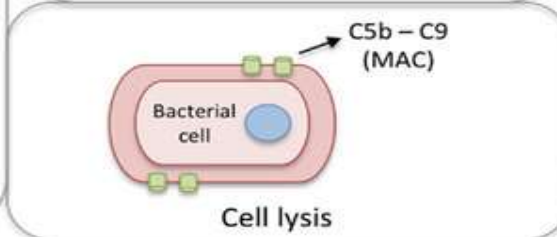
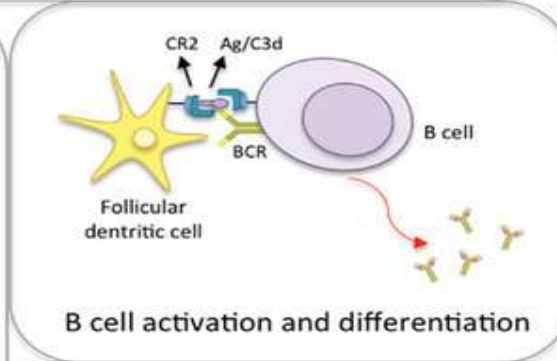
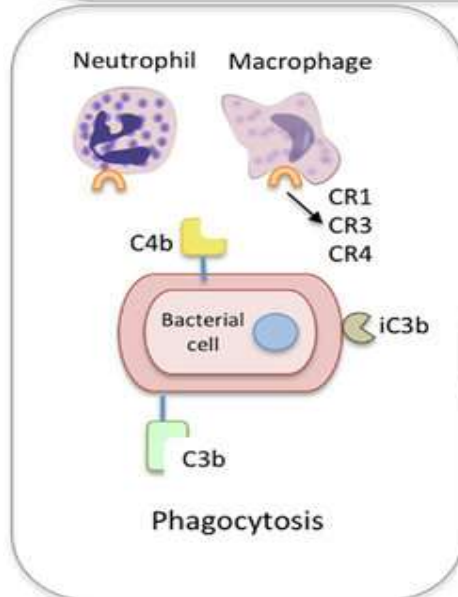
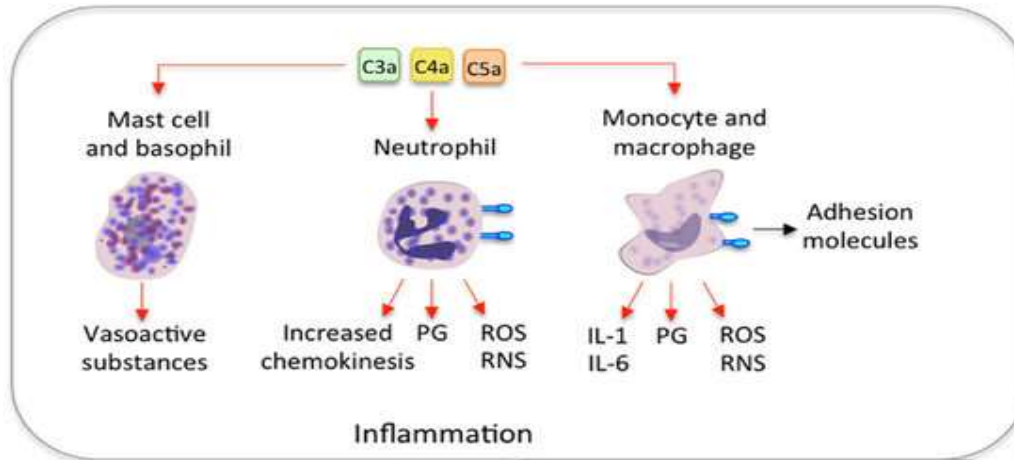


WHAT IS COMPLEMENT SYSTEM

- **Complement system** is a part of the **immune system** called the **innate immune** system that is not adaptable and does not change over the course of an individual's lifetime.
- However, it can be recruited and brought into action by the adaptive immune system.

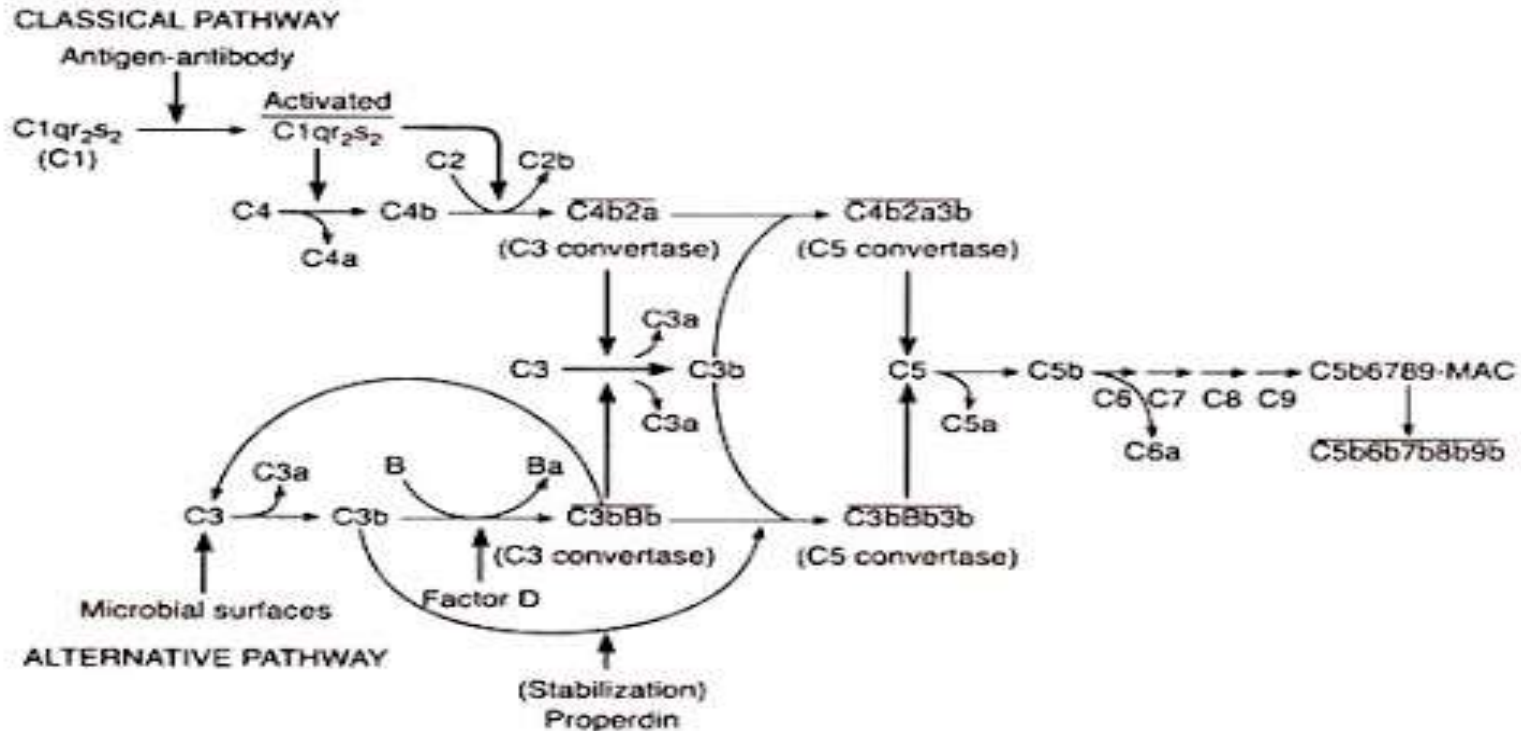
Function of Complement system



Complement Activation

CLASSICAL PATHWAY

- Begins with antibody binding to a cell surface and ends with the lysis of the cell
- The proteins in this pathway are named C1-C9 (the order they were discovered and not the order of the reaction)
- When complement is activated it is split into two parts
 - a – smaller of the two
 - B – larger part and usually the active part (except with factor 2)
- Three steps in this pathway-
 - **ACTIVATION**
 - **AMPLIFICATION**
 - **ATTACK**



Classical pathway

Lectin pathway

Alternative pathway

